

# Good Neighborhood



A Project of the Delaware Housing Coalition

3-May-09

DHC | Good Neighborhood

1

---

---

---

---

---

---

---

---

# Affordability

- DHC has traditionally focused most of its energy on the most obvious impediment -- **the scarcity of resources** -- to serving those with the fewest housing and life opportunities.



3-May-09

DHC | Good Neighborhood

2

---

---

---

---

---

---

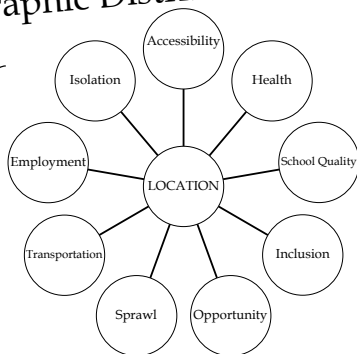
---

---

# Geographic Distribution



- Less attention has been paid to **LOCATION** or **DISTRIBUTION** as an impediment to housing affordability, a factor closely related to other issues.



3-May-09

DHC | Good Neighborhood

3

---

---

---

---

---

---

---

---

## Good Neighborhood

- *Good Neighborhood* by Morris Milgram

- Recounts his efforts to build integrated communities in the 1950s.
- Fifty years ago he established the integrated community of Runnymede in Hockessin, Delaware.



---

---

---

---

---

---

---

---

## Good Neighborhood Project

- A multi-year project to foster communities as places that

- are more affordable and accessible
- are more open and inclusive
- promote choice, mobility, and opportunity

---

---

---

---

---

---

---

---



Good Neighborhood

GOAL

Better geographic and social distribution of housing and life opportunity for all Delawareans, especially the most vulnerable.

Good Neighborhood  
Affordable | Accessible | Inclusive

---

---

---

---

---

---

---

---

# Good Neighborhood

- Fair Share Measure - Description
- Policy Development - Prescription
- Advocacy for Inclusion - Practice



3-May-09 DHC | Good Neighborhood 7

---

---

---

---

---

---

---

---

## Fair Share Measure

### Fair Share Committee

- Dr. Karen Curtis, DHC Board & U/D CCRS
- Marlena Gibson, DHSA
- Rosalind Kotz, U/D CCRS
- Dr. Steve Peuquet, U/D CCRS
- Serena Williams, DHC Board & Widener School of Law

Elizabeth Kowalczyk,  
Principal Researcher

3-May-09 DHC | Good Neighborhood 8

---

---

---

---

---

---

---

---

## Fair Share Measure

### Measuring Need: Where we started.

Delaware Households

Earning 50% or less of area median income \*

↓

And paying 50% or more of that income for housing

50%

100%

\* basis for definition of "affordable housing"

3-May-09 DHC | Good Neighborhood 9

---

---

---

---

---

---

---

---

## Fair Share Measure

### Cost Burdened (30%) Extremely Low Income (ELI) Households in Delaware (2005)

<small>Roz Kotz, Housing Needs of Extremely Low Income Households in Delaware (2007)</small>	Rent	Own	Total
Delaware	13,422	14,414	<b>27,836</b>
Kent County	1,974	2,932	4,906
New Castle County	9,595	6,529	16,124
Sussex County	1,854	4,980	6,834

3-May-09

DHC | Good Neighborhood

10

---

---

---

---

---

---

---

---

---

---

## Fair Share Measure

### Severely Cost Burdened (50%) Very Low Income (VLI) Households in Delaware (2005)

<small>Roz Kotz, Housing Needs of Extremely Low Income Households in Delaware (2007)</small>	Rent	Own	Total
30% of AMI or Less (ELI)	9,029	6,511	15,540
30% to 50% of AMI (Rest of VLI)	2,546	4,465	7,011
50% of AMI or Less (VLI)	11,575	10,976	<b>22,541</b>

3-May-09

DHC | Good Neighborhood

11

---

---

---

---

---

---

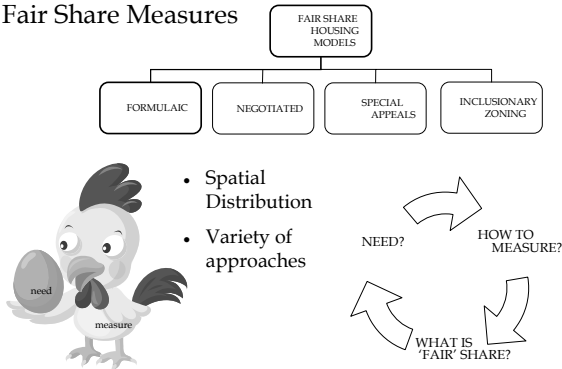
---

---

---

---

## Fair Share Measures



3-May-09

DHC | Good Neighborhood

12

---

---

---

---

---

---

---

---

---

---

## Fair Share Measure

### Preliminary Results

- Distribution of Households in Need and Affordable (<50% AMI) Housing Units
- Preliminary Fair Share Measure
- "Fair Share" by County

3-May-09

DHC | Good Neighborhood

13

---

---

---

---

---

---

---

---

## Fair Share Measure

- Progress Report
- Still a work in progress
- 2000 Data
- Attention on patterns rather than specific results
- Aiming for a measure of need rather than an arbitrary mechanism for apportioning affordable housing
- Probably can be characterized as a formulaic and consensus-building approach
- Beginning of a dialog



3-May-09

DHC | Good Neighborhood

14

---

---

---

---

---

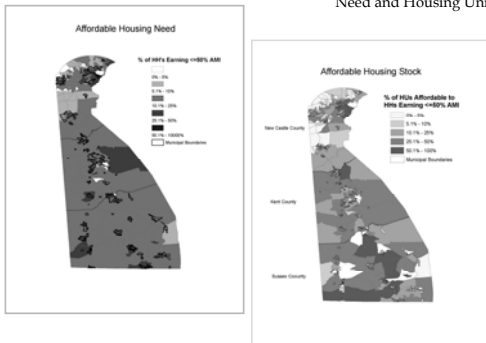
---

---

---

## Fair Share Measure

### Distribution of Housing Need and Housing Units



3-May-09

DHC | Good Neighborhood

15

---

---

---

---

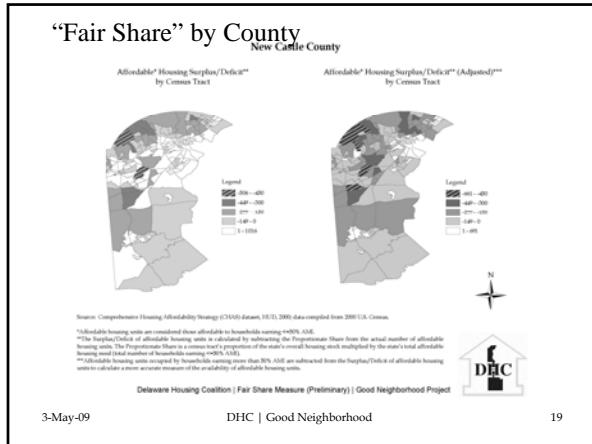
---

---

---

---






---

---

---

---

---

---

---

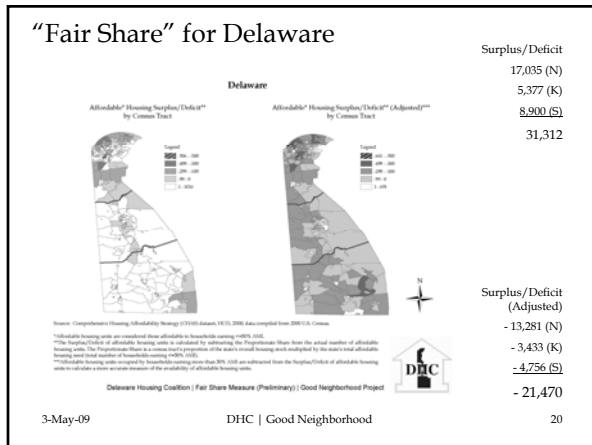
---

---

---

---

---




---

---

---

---

---

---

---

---

---

---

---

---

Fair Share Measure	Observations
• There are 61,215 households with income =<50% of AMI.	
• 22,541 of these households are severely cost-burdened, paying >50% of their income for housing.	
• 15,540 of these severely cost-burdened households have income =<30% AMI.	
• There is an absolute surplus of 31,312 units in the supply of affordable (<50% AMI) housing.	
• But, so many of these units are occupied by households with incomes >50% AMI that there is a dramatic deficit of 21,470 affordable housing units.	
• This deficit comes from a proportional deficit existing in the majority of Delaware census tracts.	

3-May-09 DHC | Good Neighborhood 21

---

---

---

---

---

---

---

---

---

---

---

---

## Fair Share Measure

## Issues

- Broader focus for policy and campaign reasons?  
Specific need (households =<50% of AMI) versus broader affordable housing needs (up to 80%)
- Narrow focus to better address the most vulnerable?  
Specific need (households =<50% of AMI) versus even more specific and critical need (portion of above group paying >50%/income)
- Make better articulation of rental/homeownership situations?
- Take factors into account such as location of employment, access to transportation?
- Factor in the issue growth management, equitable and sustainable growth?

3-May-09

DHC | Good Neighborhood

22

---

---

---

---

---

---

---

---

## Policy Development

- Shared equity/permanent affordability
  - to increase socio-economic distribution/accessibility
  - to serve some >50% / AMI in <50% / AMI HUs
- Emphasis on rental production and location
- Strategy to address cost-burdened homeowners
- ELI strategies
  - Voucher, set-aside, reservation programs in LIHTC
  - % Universal Design

3-May-09

DHC | Good Neighborhood

23

---

---

---

---

---

---

---

---

The ongoing evaluation process will be undertaken by an advisory committee of **nine** community members who have special interest in helping to formulate, guide, advance, and continually improve this work. It will include members of the faith, financial, government, low-income, and nonprofit communities. This committee will have proportionate representation from all three counties.

## Policy Development

### Good Neighborhood Committee

- Kevin Bowers (Milford)
- Dorothy Medeiros (Bellefonte)
- Carl Mazza (Newark)
- Brenda Osbourne (Felton)

3-May-09

DHC | Good Neighborhood

24

---

---

---

---

---

---

---

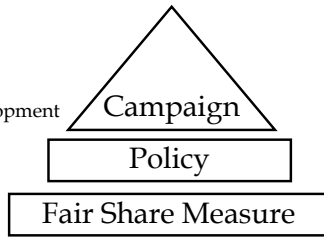
---



## Advocacy for Inclusion

### Allies

- Fair Housing
- Education
- Civic
- Community Development
- Disability
- Anti-poverty
- Faith community
- Smart growth



3-May-09

DHC | Good Neighborhood

25

---

---

---

---

---

---

---

---

## Advocacy for Inclusion

### Focus on

- the most vulnerable
- choice and opportunity
- equitable growth and sustainability
- “WHY - NIMBY?”



3-May-09

DHC | Good Neighborhood

26

---

---

---

---

---

---

---

---

Our task must be to free ourselves from this prison by widening our circle of compassion to embrace all living creatures and the whole of nature in all its beauty.  
-- Albert Einstein



3-May-09

DHC | Good Neighborhood

27

---

---

---

---

---

---

---

---